


SWISS POWER



**YOUR SERVICE PROVIDER
PROFESSIONAL, COMPETENT
AND FLEXIBLE**



OPTIMUM INTERACTION WITH VISION INDIVIDUAL, INNOVATIVE, DIVERSE

Emil Gisler AG convinces with its many years of experience, professional consultation, individual developments and designs. Active teamwork between engineering, production and well-trained employees generates versatile and creative dynamics between the wishes of the customer and economically cost-effective solutions.

Apart from the design and manufacture of GIPO treatment systems, Emil Gisler AG also captivates with its wide selection of services.

GIPO AG has been distributing, as a trading company of Emil Gisler AG, an innovative and versatile range of treatment systems with unsurpassed precision and performance not seen elsewhere since 1989. The great expertise and vast experience of our employees enable us to also develop in collaborative partnership individually designed specialized systems.

In addition to consultation and planning, you will also get the highest level of services at first hand from Emil Gisler AG. You will find in us a partner who offers everything, from new production to revisions and repairs of all brands and manufacturers.



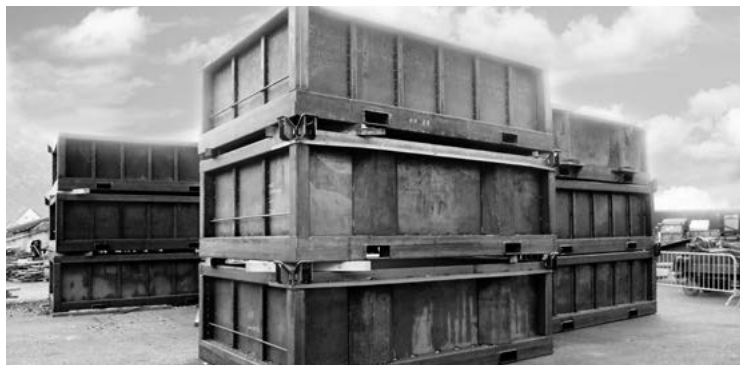


METALWORK, STEEL AND SYSTEMS CONSTRUCTION POWERFUL, SAFE, RELIABLE

Emil Gisler AG is the specialist for any type of new constructions and revisions thanks to the use of the latest and most powerful devices, machines and systems.

Our large sheet, wearing and raw material stock gives us the highest flexibility, even with express and emergency productions.

The professional competence and expertise of our employees guarantees faultless order fulfilment.







CUTTING

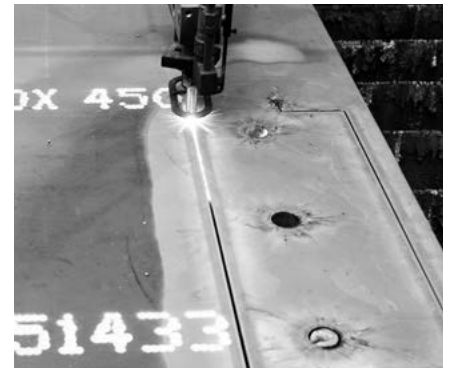
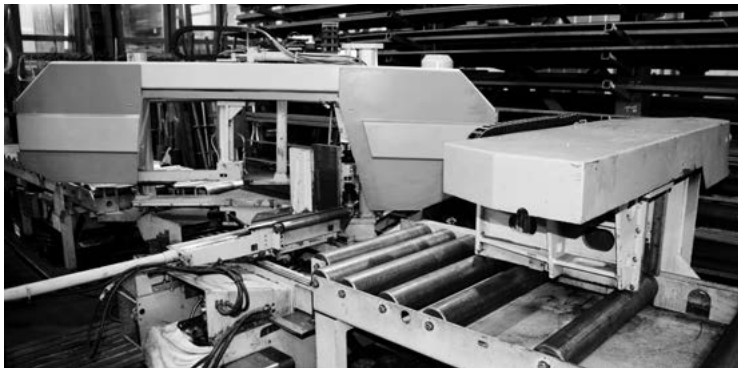
INDIVIDUAL, INNOVATIVE, DIVERSE

Our sawmill and comprehensive raw materials stock, with cutting ranges up to 620 mm, cutting of bars up to 12 m in length, means that we are well equipped in addition to our fully hydraulic high-performance bandsaw machine. The high-performance bandsaw machine is assisted by various smaller cutting machines ensuring the highest adherence to deadlines and flexibility.

Our oxy-acetylene and plasma cutting systems are coordinated as such, that we are extremely flexible and can satisfy your requirements from individual parts up to large-scale production. We work with two portals, each with a plasma and oxy-acetylene burner.

Even the largest workpieces can be cut thanks to cutting ranges of 3,500 mm x 16,000 mm and thicknesses of up to 400 mm. The shapes and particularly the dimensions fulfil the highest requirements. This in a cost-benefit ratio that is sure to convince you.

7



MECHANICAL PROCESSING

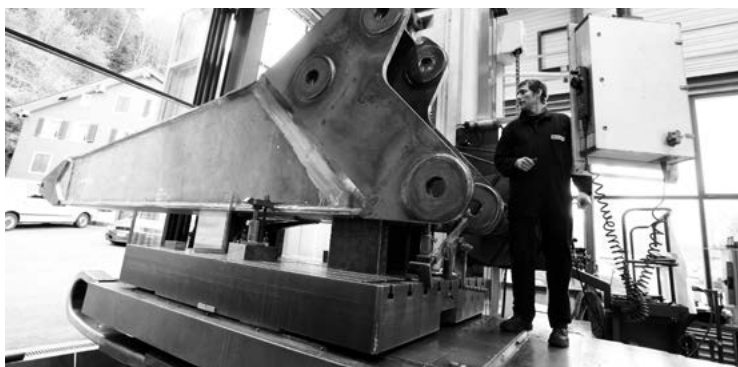
HIGH-PERFORMANCE, ACCURATE, ON SCHEDULE

Post-processing in-house

The continuous expansion of our machinery pool with the most advanced operating resources enables a variety of in-house manufacturing processes. This gives you a truly rounded service with us – from raw materials to finished assembly.

Forward-thinking

The diversity of our processing possibilities provides optimum flexibility. Our extremely competent professionals, who apply the latest production methods, support you with future-oriented solutions. We manufacture individual piece weights up to 15 tonnes in all sizes and quantities thanks to our extensive performance qualities.





MECHANICAL PROCESSING

Horizontal table borer

X axis travel	2,500 mm
Y axis travel	2,000 mm
Z axis travel	1,850 mm
W axis travel	1,300 mm

NC rotary table

Clamping surface	2,300 x 1,800 mm
max. table load	15,000 kg
Positionability	360° x 0.001°

Turning centre

max. turning length	4,000 mm
max. turning diameter	680 mm
max. turning diameter	1,250 mm

The figures refer to the largest processing centres in use. The machines listed are assisted by several devices in all sizes and designs.



SURFACE TREATMENT CLEAN, HIGH-QUALITY, ECONOMICAL

By using two separate sand-blasting machines, which are installed in our large-beam blasting cabin, we can treat large components very efficiently and prepare them for painting.

The steel sheet, machine parts and plants are refined individually in the two-components wet coating process in our in-house paint shop.

Our coating plants enable a fast and economical surface refinement. Thanks to generous preparation areas, we are able to react fast to the work to be done and adjust the capacities. We achieve a high quality standard through carefully prepared pretreatment.

Rubber-lining of conveyor belt drums is indispensable in material handling technology and plant engineering. We provide coatings in the right rubber thickness and in the demanded quality.





SANDBLASTING

Cabin size	6,000 x 5,000 x 20,000 mm
Unit weight	no weight restrictions
Grain type	hard cast grain, edged, DIN 8201, 0.80 – 1.25 mm
Overhead track	up to 1,000 kg individual piece weight

SOLVENT PAINTING

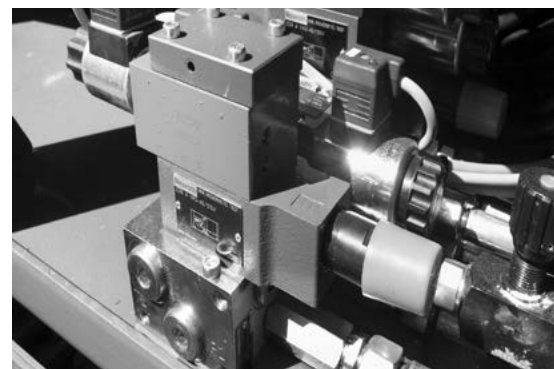
Cabin size	6,000 x 5,000 x 20,000 mm
Unit weight	no weight restrictions
Overhead track	up to 1,000 kg individual piece weight

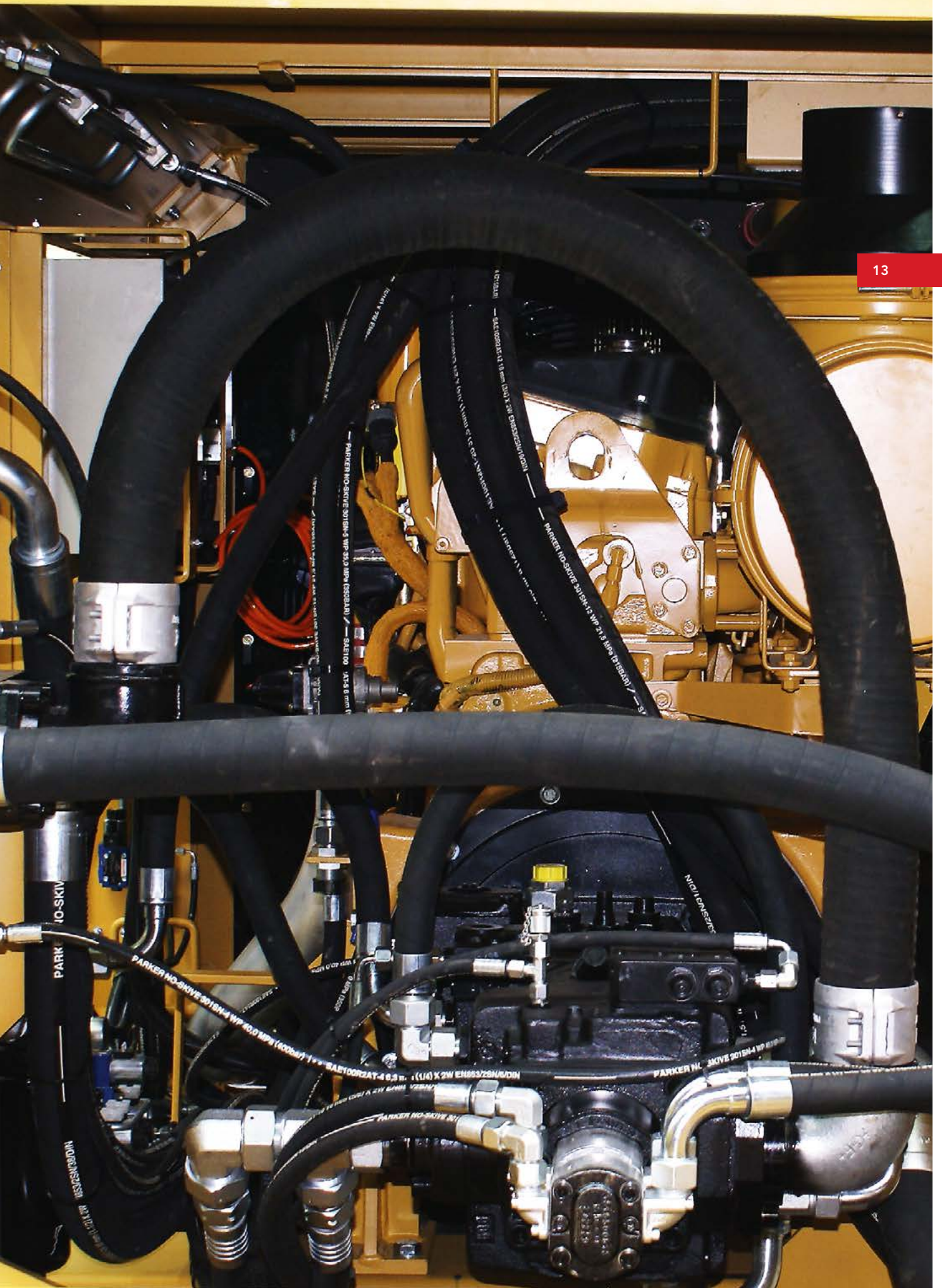


HYDRAULICS POWERFUL, SUSTAINABLE, EFFICIENT

As a manufacturer of systems, apparatuses and machines capable of moving and processing heavy loads, we know how significant the power of hydraulics can be.

We manufacture components or complete hydraulic systems according to the requirements of our customers as individual parts or in series in our hydraulic department. Our innovative ideas mean that we are able to find solutions for almost all technical problems. We offer an all-round hydraulics service 24 hours a day, 365 days a year and ensure proper functioning even with ambient temperature ranges of -50° to $+50^{\circ}$ C. Customized special agreements are possible on request.





BEFORE



22.11.2005

1. Commissioning of the plant

THE PLANT IN USE

2005

2005 - 2006

SERVICE DEPARTMENT COMPETENT, DYNAMIC, DIVERSE

Our very own service team carries out repairs, servicing and revisions directly on site. They guarantee competent work carried out on site.

- Repairs and revisions for all systems, machine types and other makes
- Extensive knowledge of all parts of the stone treatment process
- Vast experience
- Long-standing service staff
- Our own customer service department
- Continuous training of our service personnel
- Well-equipped vehicle fleet
- Our own workshop containers for stationary operations
- Very quick reaction times
- Prompt completion of all work adhering to the "all in one" infrastructure policy



29.6.2016

The plant returns for overhaul at GIPO AG

1.9.2016

Start of the overhaul work including repainting

5.12.2016

Renewed commissioning of the plant

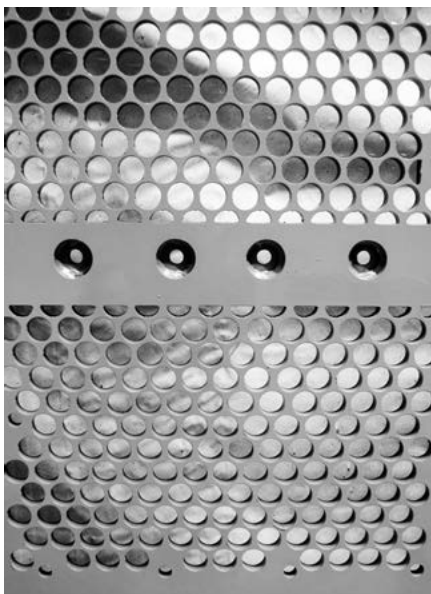
2016



WEARING AND REPLACEMENT PARTS SUSTAINABLE, INDIVIDUAL, HIGH-QUALITY

As a competent partner for all wearing parts, repairs and new constructions of all types, we excel with professional craftsmanship and long-standing experience. The replacement or repair of wearing parts optimizes the use of machinery and equipment and thus ensures a sustainable return on investment.

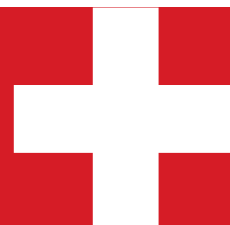
You achieve a high-performance and meticulous classification of all materials and grain sizes with our optimally coordinated sieve grills and sieve components. We supply high quality beating bars and crusher jaws for all treatment technology fields.











GIPO AG (Sales)
Industriegebiet See, Zone C
Kohlplatzstrasse 15
CH-6462 Seedorf

T +41 41 874 81 10
F +41 41 874 81 01
info@gipo.ch
www.gipo.ch
Schweiz / Switzerland / Suisse

Emil Gisler AG (Manufacturer)
Industriegebiet See, Zone C
Kohlplatzstrasse 15
CH-6462 Seedorf

T +41 41 874 81 00
F +41 41 874 81 01
info@gipo.ch
www.gipo.ch
Schweiz / Switzerland / Suisse

